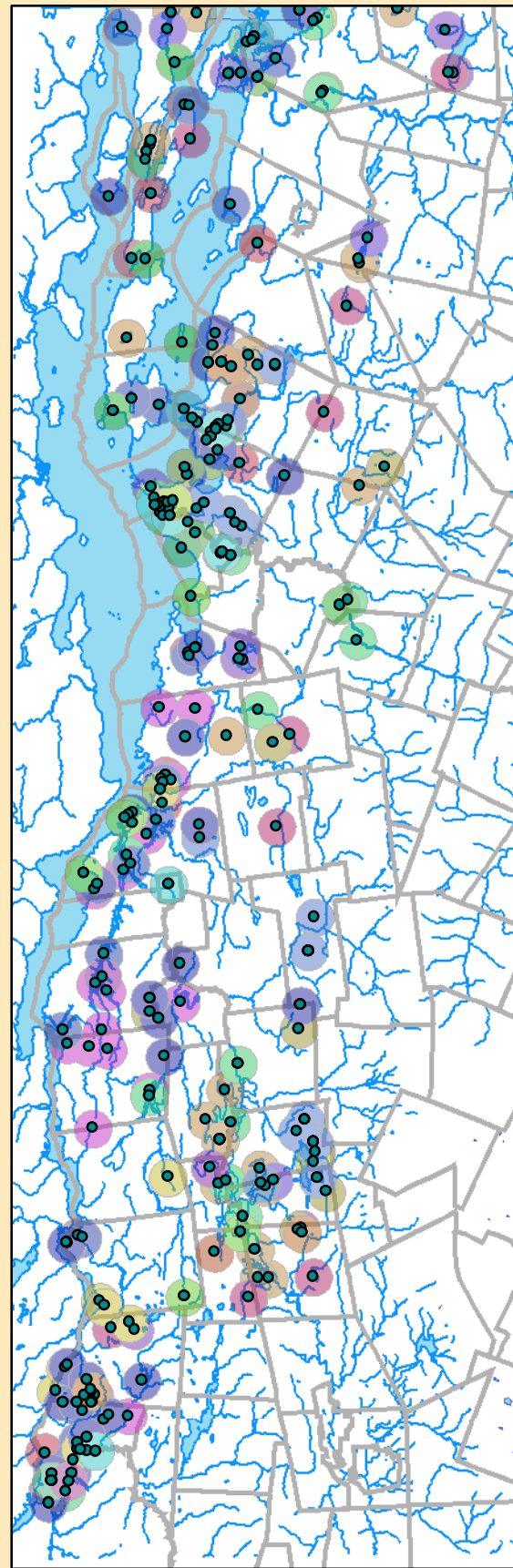


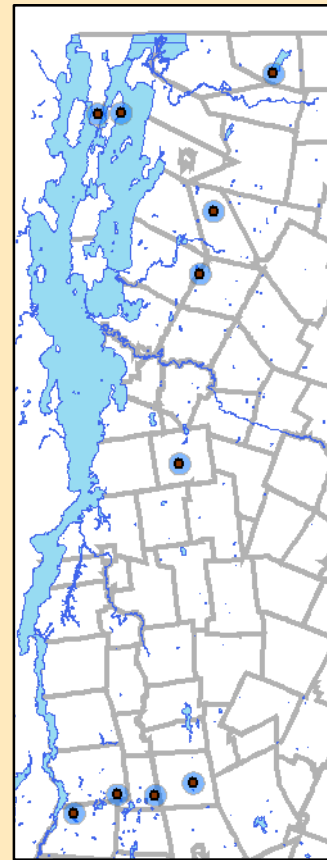
Threat Model: Case Study Small Swamps

Target 158: Hinesburg Green Ash Swamp



10 5 0 10 20 Miles

Champlain Valley Ecoregion:
Targets by Target Type

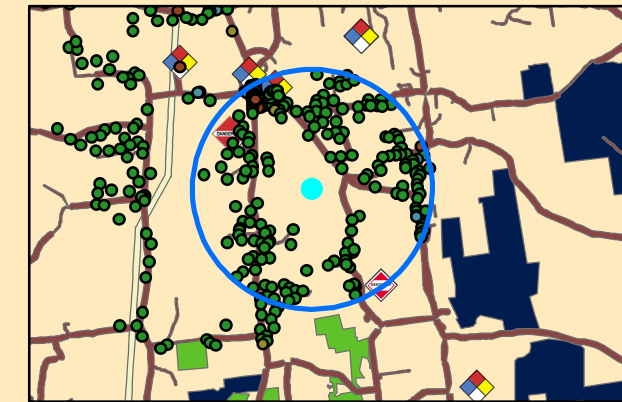
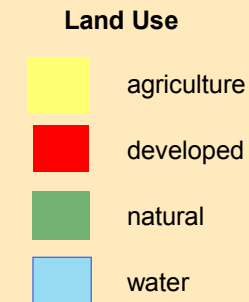


Target Type 4: Small Swamps

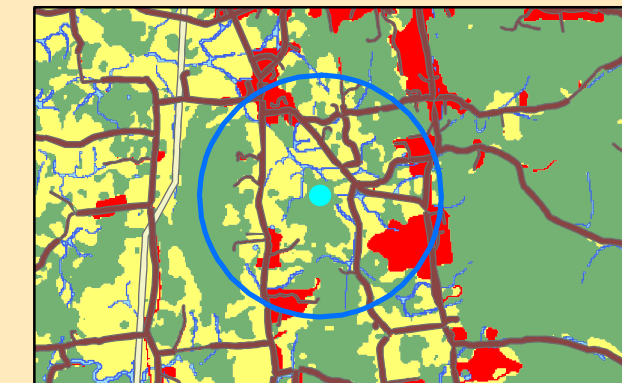
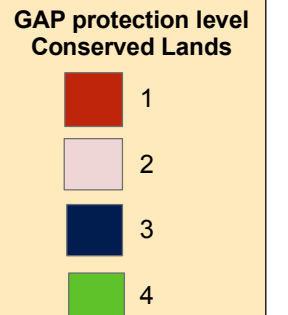
10 5 0 10 20 Miles

Threat Model Attributes:
Target 158

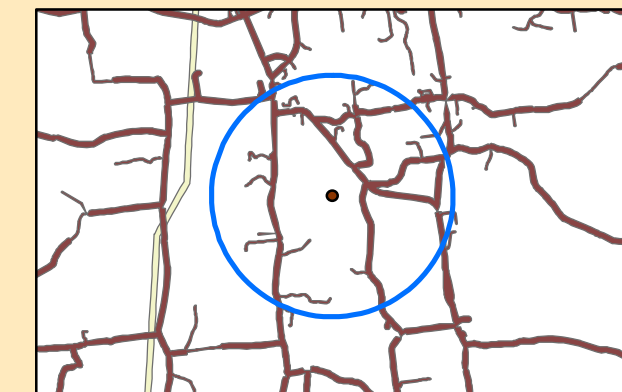
		Dams	0
		Commercial Structures	16
		Industrial Structures	0
		Public Structures	8
UNIQ_ID	158	Residential Structures	216
EOCODE	CP3A1A0000*024*VT	Total Structures	240
UPDATED_G	RED OR SILVER MAPLE-GREEN ASH SWAMP	% Agricultural Land	35.31
SITE_NAME	HINESBURG GREEN ASH SWAMP	% Developed Land	18.36
CTYNAME	Chittenden	% Natural Land	41.95
TOWN	HINESBURG	% Water	4.3
		% Natural and Water Combined	46.25
F_LATDEC	44.31416667	% Gap protection Level 4	0
F_LONGDEC	-73.09833333	% Gap protection Level 3	0
		% Gap protection Level 1 & 2	0
LASTOBS	6/5/1990	Target in Conservation Land Y/N	N
		% Railroad	0
STL_SITE_N	HINESBURG GREEN ASH SW	# Toxic Waste Points	4
TARGET_TYP	4	% Powerline	0
		TOWNNAME	HINESBURG
		% change in total housing units 70_00	64
		% Road Area	13.6



Threats and Conservation Lands



Land Cover / Land Use



2.5 1.25 0 2.5 5 Miles

Orthophoto